



GAT MONTHLY MEMBERSHIP PROGRESS REPORT

Results as of: 2/28/2021

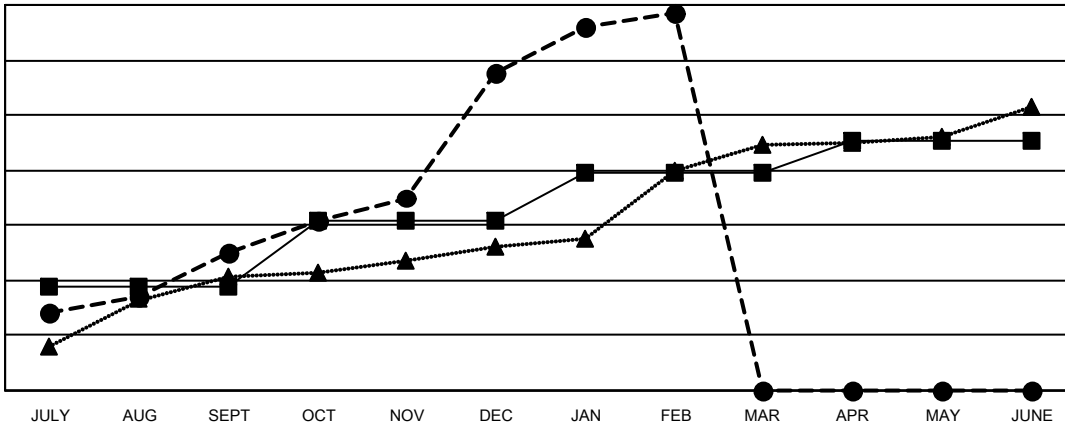
Multiple District 324

LOCATION: INDIA

| Clubs | | | |
|-----------------------|---------------|-----------|---------------|
| RESULTS FOR 2020-2021 | | | |
| QUARTER | NEW CLUB GOAL | NEW CLUBS | DROPPED CLUBS |
| JULY/AUG/SEPT | 38 | 50 | 13 |
| OCT/NOV/DEC | 24 | 65 | 4 |
| JAN/FEB/MAR | 17 | 22 | 75 |
| APR/MAY/JUNE | 12 | 0 | 0 |

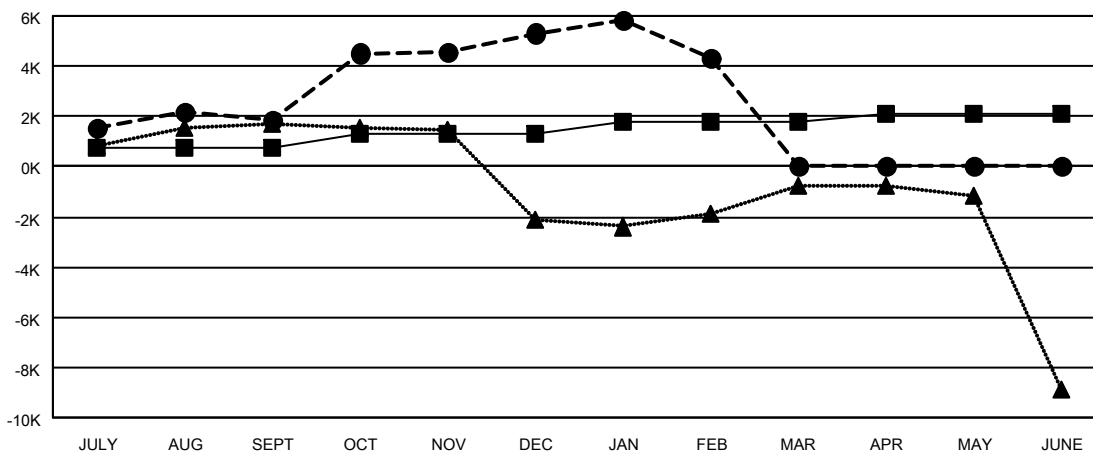
| Members | | | |
|-----------------------|------------------------|----------------------|--|
| RESULTS FOR 2020-2021 | | | |
| QUARTER | MEMBER GROWTH NET GOAL | MEMBER GROWTH ACTUAL | DROPPED MEMBERS ACTUAL (including transfers) |
| JULY/AUG/SEPT | 740 | 5,973 | 2,583 |
| OCT/NOV/DEC | 560 | 7,350 | 2,909 |
| JAN/FEB/MAR | 450 | 1,391 | 2,100 |
| APR/MAY/JUNE | 330 | 0 | 0 |

GOALS AND ACTUAL NEW CLUBS CUMULATIVE



- - CURRENT YEAR GOALS FOR NEW CLUBS
- - CURRENT YEAR ACTUAL NEW CLUBS
- ▲ - LAST YEAR ACTUAL NEW CLUBS

GOALS AND ACTUAL MEMBERS CUMULATIVE



- - MEMBER GROWTH NET GOAL
- - MEMBER GROWTH ACTUAL
- ▲ - LAST YEAR MEMBERSHIP ACTUAL

| | | | |
|------------------------|--|---------------------------------|-----------------|
| DROPPED CLUBS: 92 | 1327 CLUBS OF 1722 ADDED 1 OR MORE NEW MEMBERS | <u>GENDER DISTRIBUTION</u> | |
| | | MALE | 51,630 (77.38%) |
| <u>DROPPED MEMBERS</u> | | FEMALE | 15,089 (22.62%) |
| DECEASED | 233 | TOTAL FAMILY UNIT MEMBERS | |
| CLUB CANCELLED | 1,903 | 28,622 | |
| OTHER | 5,456 | FAMILY MEMBERS PAYING HALF DUES | |
| TOTAL | 7,592 | 17,714 | |

[CLICK HERE FOR CUMULATIVE MEMBERSHIP DATA](#)